

STYLISH OUTDOOR SOLUTIONS

LIVING SPACE FUTURE

ELEGANT INTERIORS

INNOVATION AND SUSTAINABILITY



**CONTENTS**

|    |                         |
|----|-------------------------|
| 4  | Mission                 |
| 7  | 5 elements              |
| 8  | Create, design, produce |
| 14 | Aluminium and minimal   |
| 16 | Wood and doors          |
| 18 | Outdoor                 |
| 20 | Impronta experience     |
| 22 | Projects                |

# MISSION

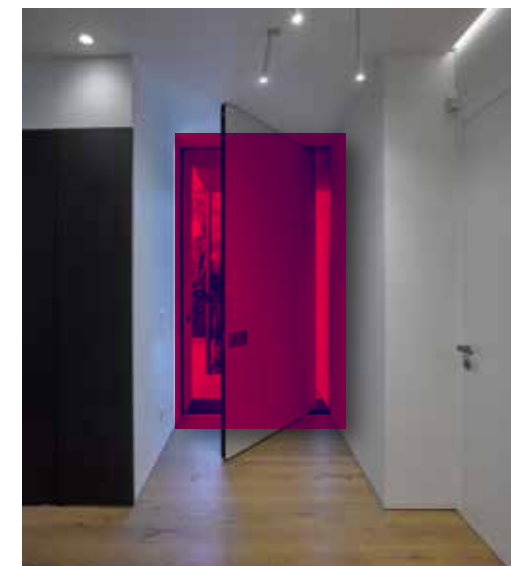
We believe in **PASSION**,  
**INNOVATION**  
and **WORKMANSHIP**.

In **DELIVERING** the best **DESIGN**.

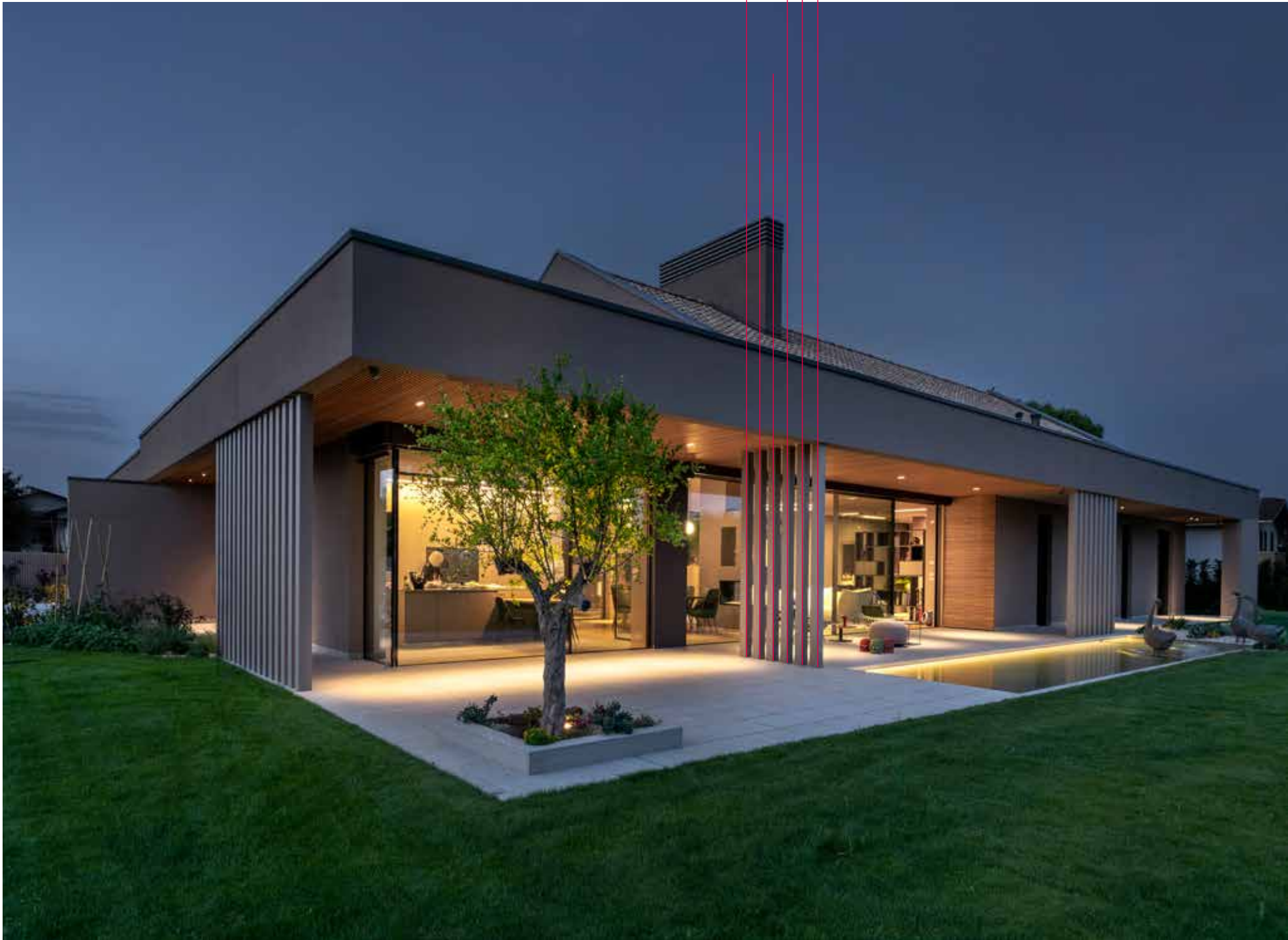
## WHAT IS OUR MISSION?



To create **brehtaking interiors** and offer **unbeatable comfort** with the **5 Impronta ELEMENTS**



Design | Light | Silence | Wellbeing | Safety



# THE 5 IMPRONTA ELEMENTS

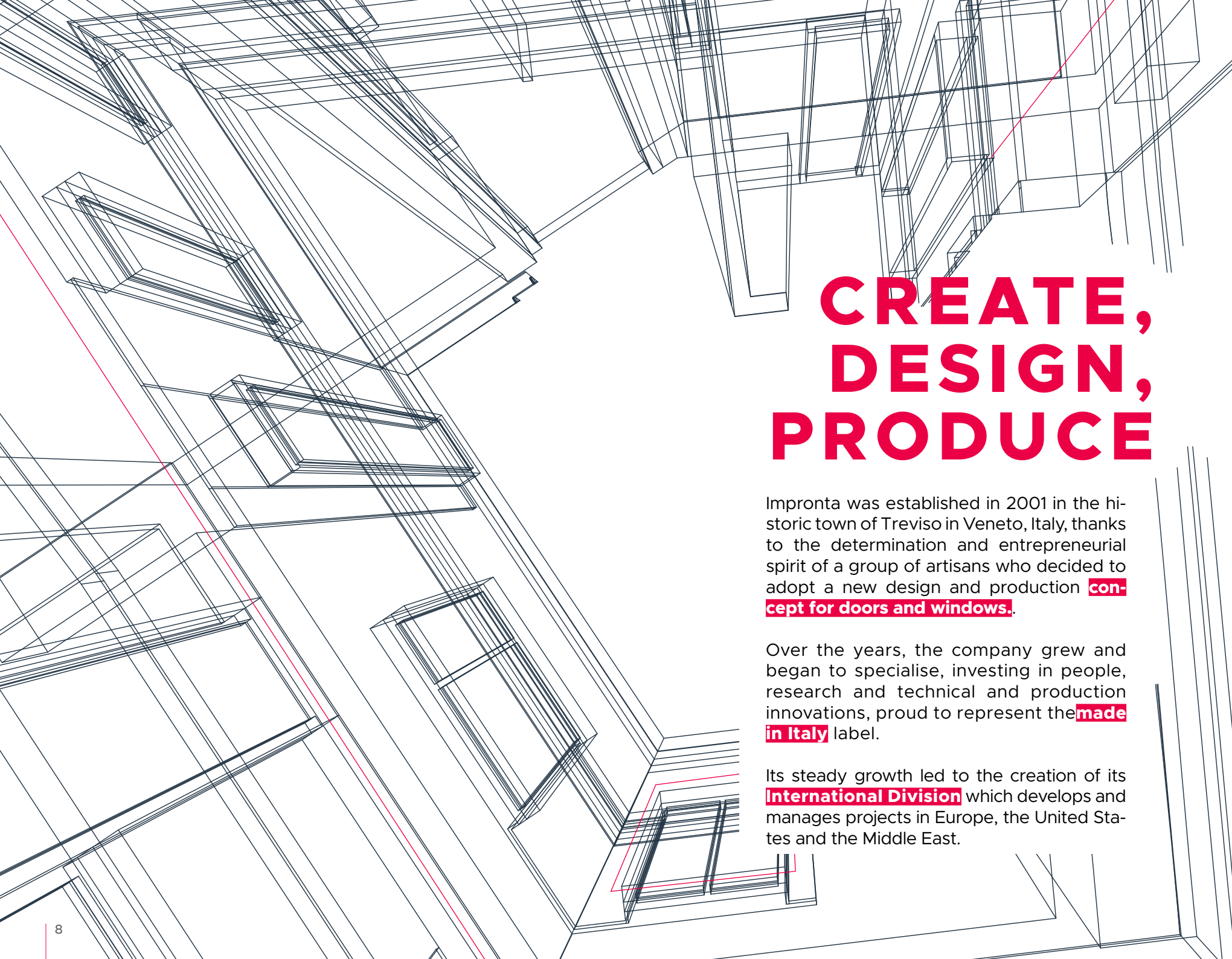
**LIGHT**  
Minimalist solution that lights up your space with slim profiles and glass walls that create new perspectives and continuity between indoors and outdoors

**WELLBEING**  
The warmth of wood, the contemporary appeal of aluminium, wood-aluminium options for high thermal insulation

**DESIGN**  
Windows and doors that inspire and convey character and personality with their innovative design and attention to detail

**SILENCE**  
Shut out noise and enjoy the silence, thanks to the unbeatable acoustic performance of our products

**SAFETY**  
High-quality materials and cutting-edge solutions guarantee safety at all times



# CREATE, DESIGN, PRODUCE

Impronta was established in 2001 in the historic town of Treviso in Veneto, Italy, thanks to the determination and entrepreneurial spirit of a group of artisans who decided to adopt a new design and production **concept for doors and windows.**

Over the years, the company grew and began to specialise, investing in people, research and technical and production innovations, proud to represent the **made in Italy** label.

Its steady growth led to the creation of its **International Division** which develops and manages projects in Europe, the United States and the Middle East.



The company produces different ranges of doors and windows: aluminium, wood, wood-aluminum and the two minimalist options, combining the best in design, materials and colours to add beauty and value to any home. As well as its **indoor solutions**, it also produces an **outdoor** collection and a wide selection of **accessories.**



CREATE, DESIGN, PRODUCE

## A BLEND OF ART AND INDUSTRY

**Tradition and innovation** go hand-in-hand in the Impronta **PRODUCTION DEPARTMENT** to deliver designer solutions of the highest technical and quality standards. In the department of 7000 m<sup>2</sup>, our highly qualified craftsmen and technical staff apply their experience and manual skills, supported by cutting-edge technology.

We believe in the importance of people but we also believe in investing in new technologies to grow and **automate our processes**, for a modern production process that gives us the competitive edge. Our machinery offers flexibility and millimetric accuracy, so we can deliver stylish, sophisticated, **tailor-made** projects.

Recently we introduced the Kanban management method to our automated vertical warehouse to ensure optimisation and sustainability and invested in an innovative **anthropomorphic robot** and an electronic control system for the painting process, allowing us to apply **3K protection** to our wood doors and windows.



Impronta combines industrial precision with **bespoke craftsmanship**, drawing on the know-how, experience and accuracy of its skilled workforce. Its invaluable team of craftsmen is the

creative force behind Impronta products, offering maximum attention to detail and customisation. The final touch is given by the Impronta installers, professionals who receive

ongoing training and updating thanks to courses run by the *Impronta Academy* in conjunction with our *Research and Development Department*.

CREATE, DESIGN, PRODUCE

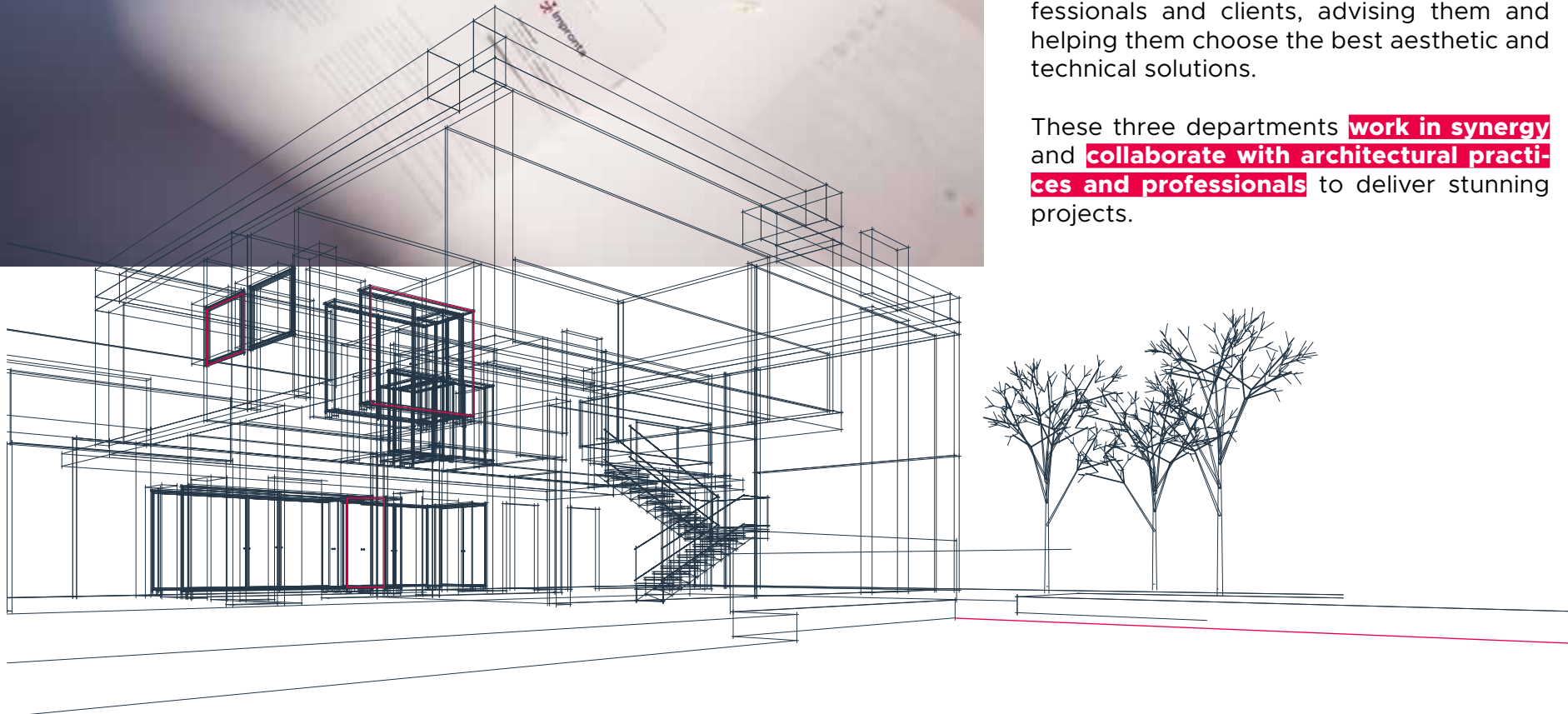
## DESIGN AND SALES GUIDANCE

Impronta's trademark style is present in every stage of the design process, from the initial rendering to the end product.

The **Research and Development Department** closely follows developments in the sector, chooses the most advanced production methods and keeps abreast of the latest materials and technologies to ensure products are of the highest quality standards. It also draws up personalised technical drawings for each project.

The company's **onsite team** lend their support on the ground, coordinating with the **sales team**, which works alongside the professionals and clients, advising them and helping them choose the best aesthetic and technical solutions.

These three departments **work in synergy** and **collaborate with architectural practices and professionals** to deliver stunning projects.



## We think green

Here at Impronta we are committed to a more sustainable world, so have introduced eco-compatible criteria into each stage of our production process: from the selection of our timber to optimised cutting processes, painting processes which minimise product waste, water-based paints and ecological disposal of the company's waste and refuse. The company is committed to clean energy, which it produces with its own photovoltaic system and uses in production.

# ALUMINIUM



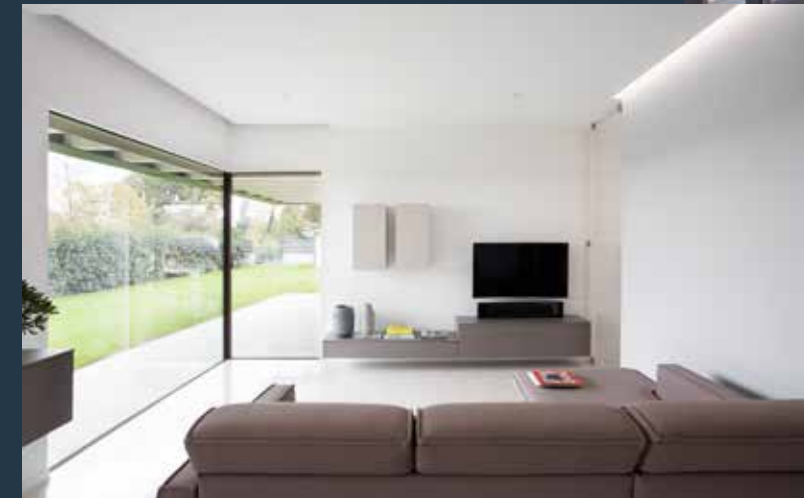
LIGHT  
DESIGN  
SILENCE  
WELLBEING  
SAFETY

The **5 Impronta elements** can be found in all its aluminium and wood doors and windows. Both these materials are sustainable and high-performance but have different technical and aesthetic features.

To meet the demands of modern architecture, Impronta has developed its own collections of **aluminium doors and windows**. These stylish products blend effortlessly into contemporary environments and give any home a sleek and stylish appearance. Aluminium has **endless potential in the world of fittings**, thanks to its wide range of finishes, unbeatable insulation, proven durability and maximum comfort.

## MINIMAL BY IMPRONTA

The Impronta minimalist collection is the culmination of a new production technology which enhances **contemporary architecture**, offering a minimal design and **unparalleled thermal performance**; here the real protagonist is light. Highly versatile solutions with thermal break and minimal profiles keep the elements out and living comfort in. Robust hardware ensures maximum safety, while the choice of finishes complement the furnishings and blend in with the architecture.







### WOOD DOORS AND WINDOWS

Impronta wood doors and windows are a combination of the old and the new. Wood is a living material which protects and enhances our homes, creating continuity and **harmony with the outside world**. It offers both safety and wellbeing, excellent light

transmission, effective insulation and comes in many **different varieties**: fir, larch, red grandis, oak, teak and ash. Generous frames, sliding doors and vast expanses of glass guarantee the ideal balance between style and versatility, using only the best glass and accessories.

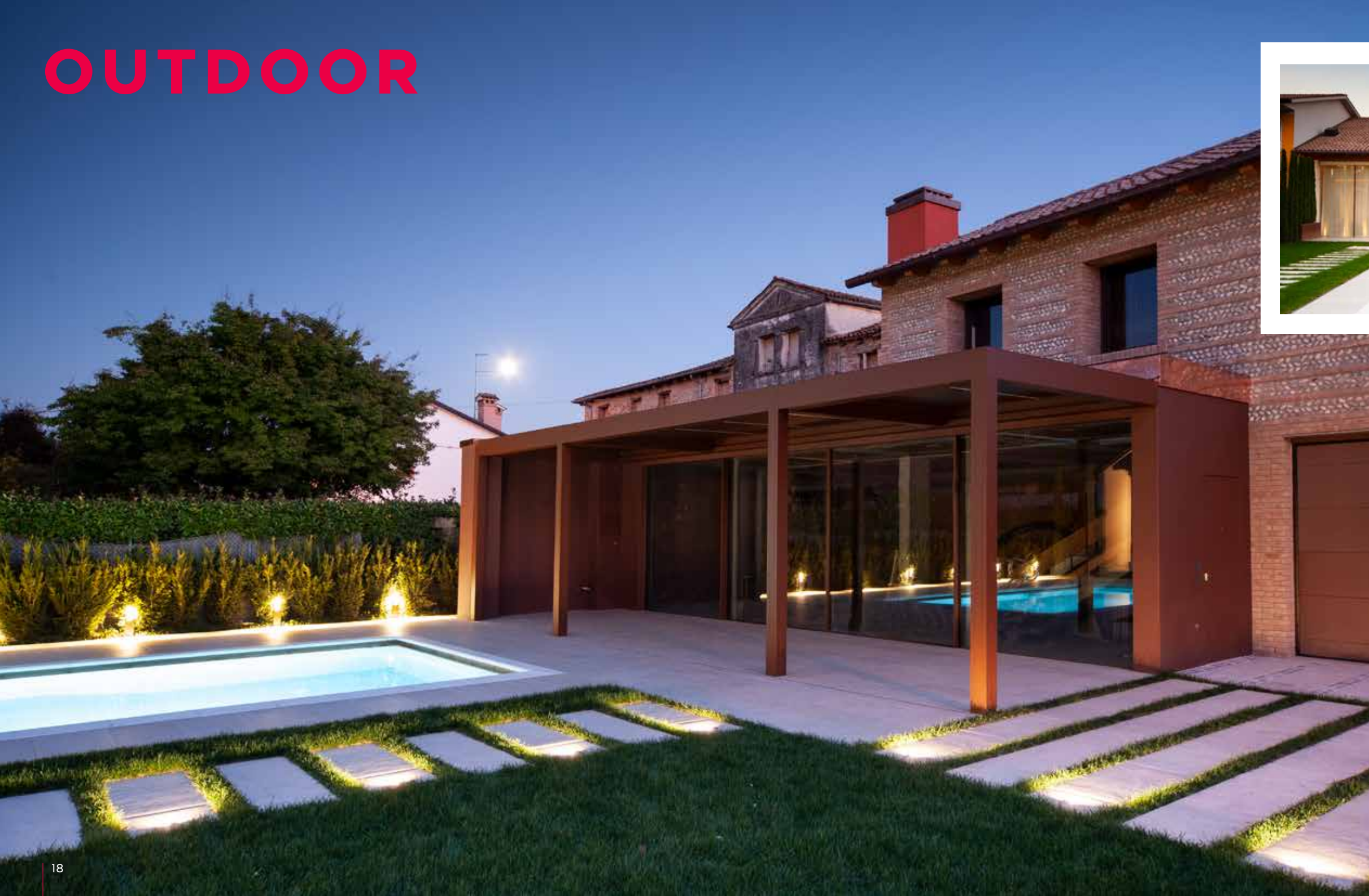


### DOORS

**Doors** are an essential architectural accessory and at Impronta they are designed to add a touch of class to your home. Available in different materials and finishes, Impronta front doors deliver the four must-haves for any entrance: security, thermal and acoustic insulation, durability.



# OUTDOOR



Impronta also produces a range of outdoor solutions.

The **outdoor** collections combine functionality, technology – with home automation systems – and beautiful designs for elegant outdoor spaces.

**Shutters**, flap shutters, blade or sliding **louvers** combine beauty with practicality to enhance both classic and contemporary outdoor spaces.

**Rolling shutters** and **blackout blinds** are ideal for guaranteeing privacy, protecting your interiors and ensuring energy efficiency.

Lastly, **bioclimatic pergolas** provide a feeling of wellbeing outdoors with their minimal, sophisticated design. If you love the outdoors and want to create a natural extension of your living area.



# IMPRONTA EXPERIENCE

Enter the world of Impronta,  
speak to our consultants at  
**AtelierImpronta**  
in Treviso and Desenzano.



**Consultancy services, displays, workshops and events** for design studios and clients.

**AtelierImpronta** is a versatile space that is constantly evolving, where professionals and clients can meet, design and share.

## **AtelierImpronta Treviso**

A large, welcoming space (700 m<sup>2</sup>) for architects, designers, businesses and clients near the old city centre of Treviso and just a couple of miles from the company's production facilities.

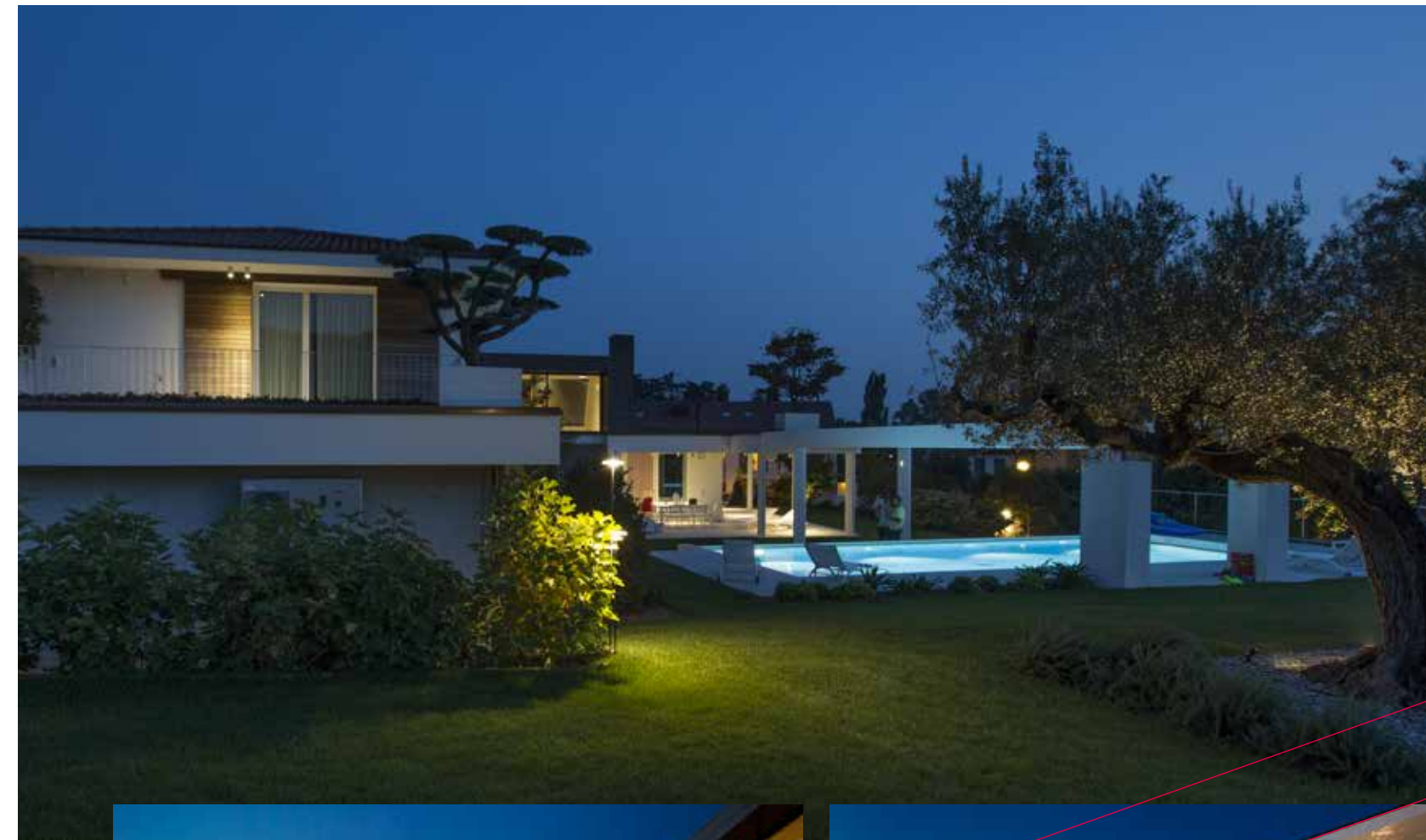
## **AtelierImpronta Desenzano**

A location that is second to none on Lake Garda, where clients can experience Impronta. Our consultants are on hand with the latest trending designs, materials and the best solutions for your home.





**FL SELVANA**







**CASA DI CAMPAGNA**













VILLA CASARSA





**IMPRONTA**

Via delle Industrie, 18  
31030 Breda di Piave (TV) - ITALY  
T. +39 0422 6066  
info@impronta.info  
improntahome.com

**ATELIER IMPRONTA**

Villorba (TV)  
Desenzano del Garda (BS)



[improntahome.com](http://improntahome.com)